

MRI is changing the way we see TMJ

September 2019

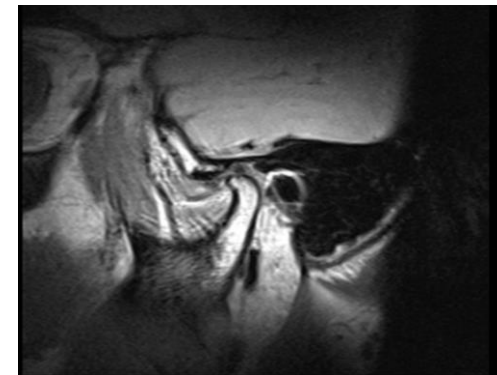
Why MRI?

- MRI is the Gold Standard in TMJ imaging and the best test to assess for articular pathology, including bilaminar disc displacement, malalignment, capsular thickening and joint effusion, which may suggest joint dysfunction.
- An X-ray can detect severe arthritis, while MRI can show what is happening with the soft tissues.



Why choose MIC for your TMJ patients?

- Our high-resolution MRI produce diagnostic images capable of resolving the intricacies of the anatomy and pathology associated with TMJ's.
- We now offer 3T for the highest resolution possible.
- Our state-of-the-art, first of its kind imaging allows for 'live' dynamic viewing of the TMJ while opening and closing, allowing for functional moving images to be viewed.
- We take static MRI images in the open and closed positions to assess for bilaminar disc displacement and recapture and can detect stuck discs.
- We utilize a mouth measurement tool to assess mouth opening, which aids in surgical assessment.



CT

- MIC has a state-of-the-art low dose CT scanner.
- CT is excellent for surgical planning to assess bony anatomy and overall TMJ alignment using 3D Reconstruction software to determine joint morphology.

With MRI & CT both available, MIC offers one-stop imaging for patients suffering from TMJ pain.

We look forward to welcoming your patients to our clinics.