

The future of MRI is here.

Learn how our Siemens MAGNETOM Vida 3T changes the way we see your patients.

Visit mic.ca

Official Diagnostic Imaging Provider for:



There's a new MRI in town...



MIC launches Edmonton's first community-based 3T MRI.



MIC offers your patients the most advanced medical imaging.

MIC is now home to Edmonton's first community-based 3T MRI and proud to be the first community installation of the Siemens MAGNETOM Vida 3T MRI across the country.

MIC has three MRI scanners in two locations:

- **College Plaza**
Siemens Symphony 1.5T MRI
- **Century Park**
Siemens Vida 3T MRI
Siemens Espree 1.5T MRI

This gives us the capacity to offer many patients next-day appointments, allowing them to take control of their health and move forward with a treatment plan.

What makes the Siemens Vida 3T MRI unique?

The Siemens Vida 3T MRI scanner is the leader in its class. Using Siemens new BioMatrix technology, the Vida 3T puts the concept of precision medicine to work on every scan.

The scanner adapts to the patient

The Siemens Vida 3T makes the MRI process more efficient by adapting scanning protocols to the patient, rather than the other way around.

The scanner addresses each patient's anatomy and physiology. Sensors embedded in the scanner table track the patient's breathing and their ability to hold their breath. Data from the sensors feed into the system and the interfaces automatically set optimal scan parameters based on the patient's anatomy and move the scanner table to the correct position.

Incredible images

And then there are the images themselves. High-precision imaging showing minute detail gives our radiologists the information they need to recommend the right treatment for each patient.

Improved MRI experience:

- The scanner automatically adjusts to the patient making the exam more comfortable for people with injuries or restricted mobility.
- The 70 cm opening is better for patients who may feel claustrophobic.
- The strength of the 3T magnet means scans are quicker.
- The quality of the images is exceptional and fewer rescans are necessary.
- The 3T MRI is quieter.

Breast and Prostate MRI exams

MIC is now able to offer breast and prostate MRI exams on the new 3T MRI. This means women and men can choose to have these scans done, particularly if they have a strong family history of cancer or are considered high-risk due to other factors.

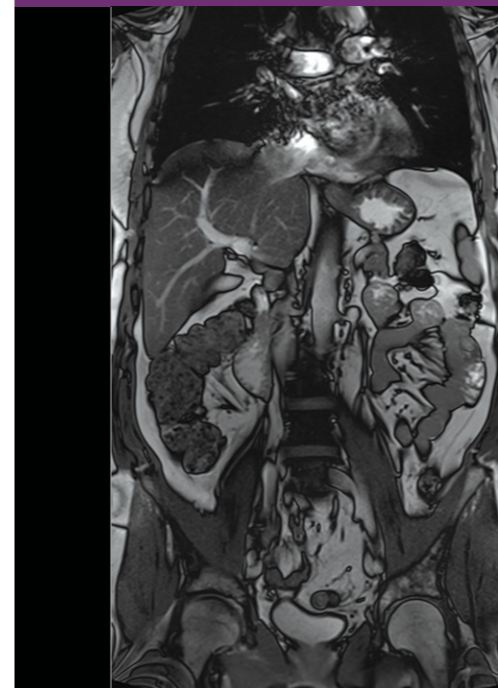


Our approach

The 1.5T MRI is the standard of care in most hospital and community clinics across the country. It produces high quality imaging results and MIC will continue to offer scans on our 1.5T MRIs at College Plaza and Century Park.

The 3T is a significant step forward for medical imaging, creating exceptional images for certain types of scans. At MIC, the following exams will only be done on the Vida 3T: breast, brain (seizure, sella, concussion), brachial plexus, lumbar plexus, hips, long bones, fingers, abdomen, pelvis, thoracic, prostate and high-contrast MR angiography.

For all other MRI exams, our booking staff will make an appointment on either the 3T or the 1.5T based on the body part being scanned. Before your patient's MRI, one of our radiologists will review your requisition form to ensure the scanner booked is the best one for your patient's needs.



3T MRI Abdomen

What is the cost?

Community MRIs are not insured by Alberta Health. Our booking staff will confirm the cost when your patients call to make an appointment. Many patients who have their MRIs done at our community locations are reimbursed for some, or all, of the cost through their health spending accounts or extended health benefits. All patients booking an MRI will need to have a requisition form.

Quick turnaround

Depending on the type of scan your patient requires, we are usually able to offer next day appointments.

Your patients. Our priority.

All scans on our community-based 1.5T and 3T MRIs are read by MIC's team of specialized radiologists who interpret MRIs at the Kaye Edmonton clinic and the University, Stollery, Mazankowski, Royal Alex and Grey Nuns hospitals.

You can count on our radiologists and technologists to work with your patients to get the very best images. Our radiologist will provide a complete report to you, generally within 24 hours.